

Future Mobility Improvements



MOBILITY
A balanced mobility network increases quality of life by ensuring all people, regardless of ability, can access destinations within the community.

WALKING, BICYCLING, TRANSIT
Walking, bicycling, and transit should be convenient, pleasant, and safe.

The Mobility Element includes goals, policies, and recommendations that will lead to a robust multi-modal network. It promotes walking, bicycling, and taking transit while continuing to provide for needed vehicular access in the community.

OBJECTIVES

WHY ARE WE UNIQUE?

In San Ysidro, we take pride in our neighborhood and strive for excellence in...

- education
- greater job opportunities
- diversity in housing
- access to health services

Community Plan Objectives

- Establish an attractive international border destination for residents, businesses, and visitors
- Enhance and leverage bi-cultural and historic traditions and diversity.
- Provide a plan with a mix of land uses that serve residents, generate prosperity, and capitalize on visitor traffic.
- Increase mobility for pedestrians, cyclists, transit, and automobiles through a border intermodal center, new linkages at key points, and a strong pedestrian focus.
- Identify locations for urban parks, plazas, promenades, and venues that support a variety of events and gatherings.
- Expand park and recreation opportunities, including trail options at Dairy Mart Ponds, and joint use opportunities, promoting a healthy, active community.
- Incorporate sustainability practices, policies, and design features that reduce greenhouse gas emissions, address environmental justice, and contribute to a strong economy.
- Provide a lively, pedestrian-friendly, healthy environment where kids can walk safely to school.
- Facilitate the development of San Ysidro Historic Village.
- Craft a clear and practical implementation strategy.

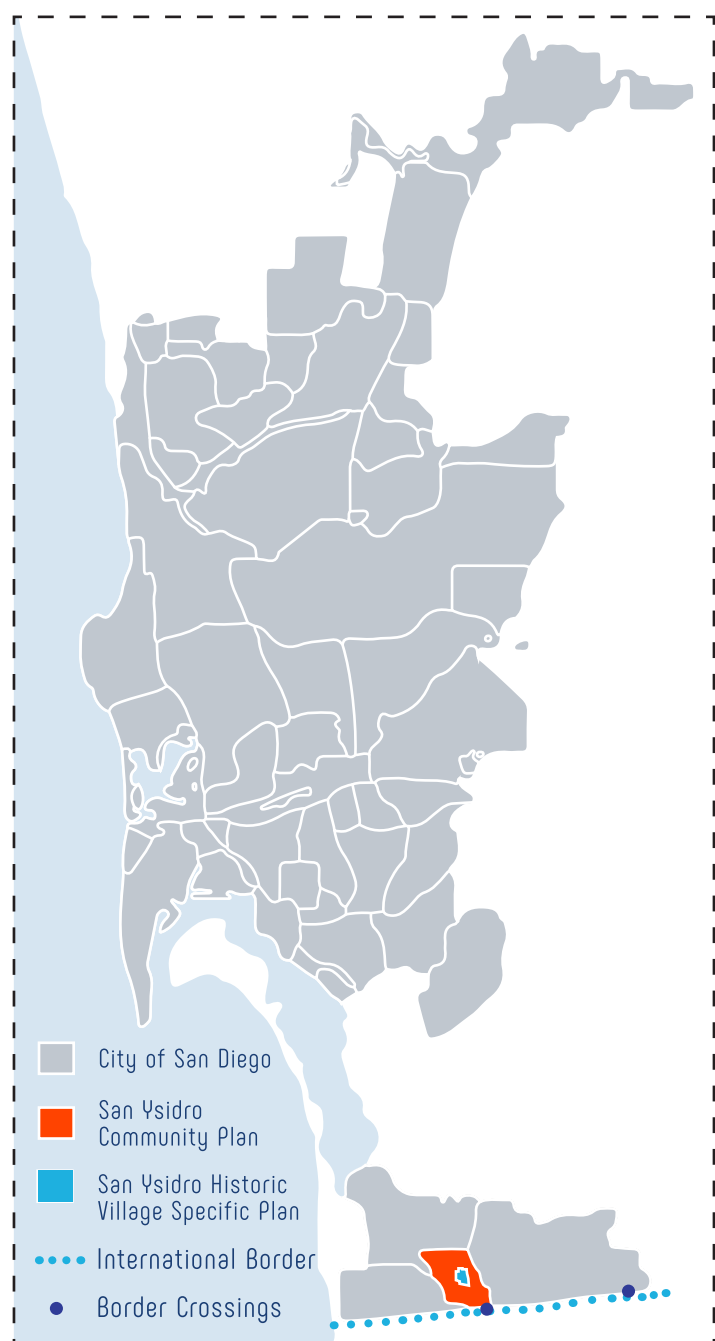
COMMUNITY OUTREACH

This Community Plan was an extensive, collaborative effort between a diverse representation of Community Planning Group members, residents, property owners, various business interests, local community organizations not-for-profit groups, as well as, participating public agencies. Engagement activities involved stakeholder meetings, a walk-audit, booths at community festivals and school functions, a community survey, outreach to students through the local schools, and presentations to other organizations and agencies. The participation strategy was designed to:

- Enhance community participation and gather input to improve mobility, housing, recreation, access, and quality of life issues for residents, businesses, and visitors.
- Integrate consensus building with the planning process.
- Strengthen community partnerships.
- Provide learning opportunities.

San Ysidro is a long-standing community of Mexican heritage, uniquely situated along the international border. San Ysidro's location, adjacent to Mexico, provides abundant opportunities for cultural exchange and commerce, serving both the tourist and the resident population.

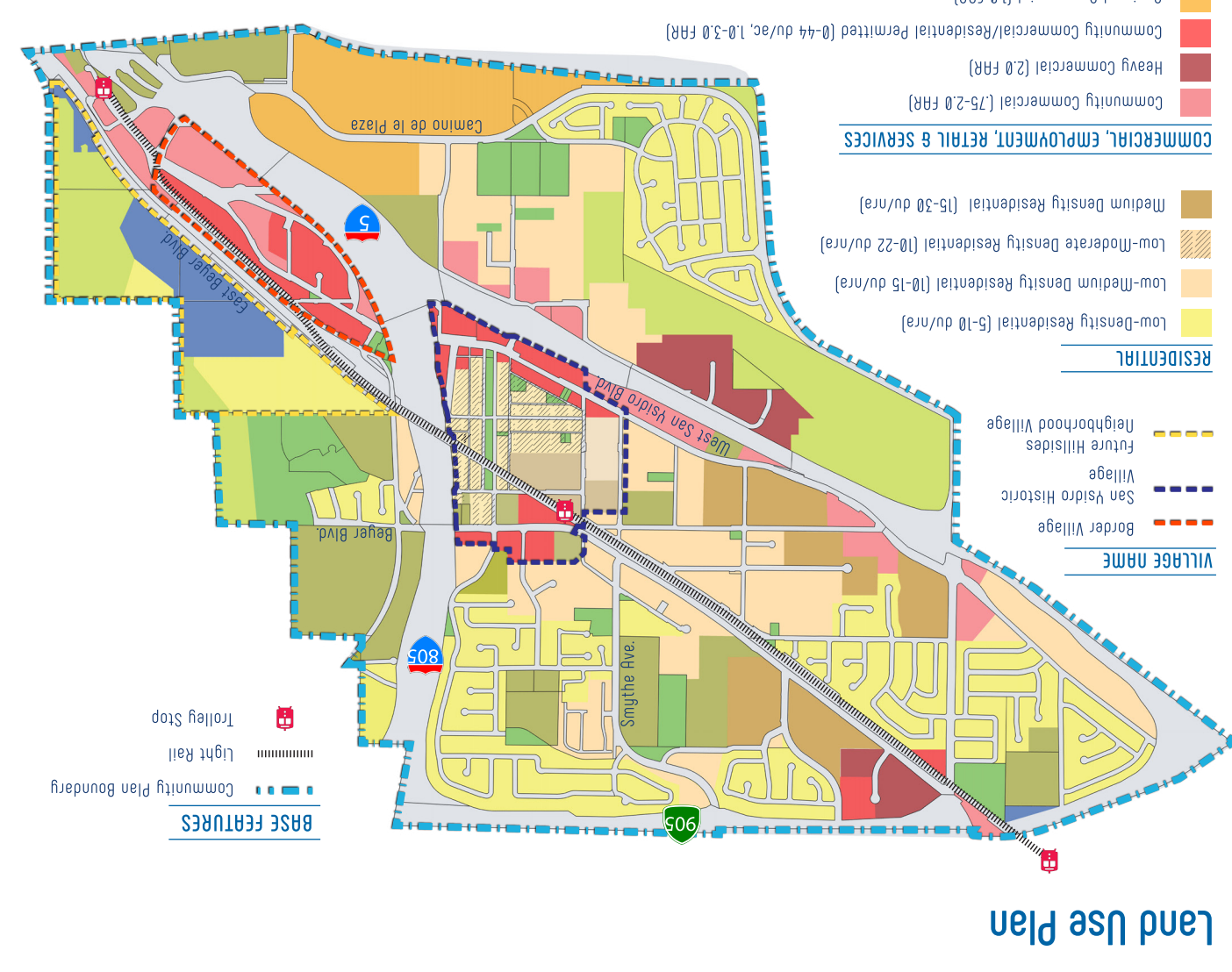
The San Ysidro Land Port of Entry is one of the world's busiest land ports and directly impacts the community of San Ysidro. With strength in its people who have maintained a strong, tightly-knit community with an optimistic vision for its future, San Ysidro is both a bustling, vibrant community and gateway to San Diego and the rest of the United States.



Beautiful streets provide active pedestrian spaces that are convenient and safe to walk, bike and shop.

Pedestrian-oriented design

Art, culture, and historical amenities



URBAN DESIGN

The Urban Design Element describes the community character for San Ysidro. It provides goals and policies to guide future private and public development and create a more connected urban design that fosters a well-planned network of public spaces defined by social, visual, and physical environments.

Urban Design fosters a community that consists of a public network of public spaces defined by social, visual, and physical environments.

The Urban Design Element describes the community character for San Ysidro. It provides goals and policies to guide future private and public development and create a more connected urban design that fosters a well-planned network of public spaces defined by social, visual, and physical environments.

establishe:

- village design
- public spaces
- neighborhoods
- community gateways and linkages
- streetscapes and pedestrian orientation
- passes and alleys
- public art

LAND USE ELEMENT

establishes the distribution and pattern of land uses throughout the San Ysidro community for the future development of:

- residential
- commercial/mixed use
- institutional
- village-designated areas

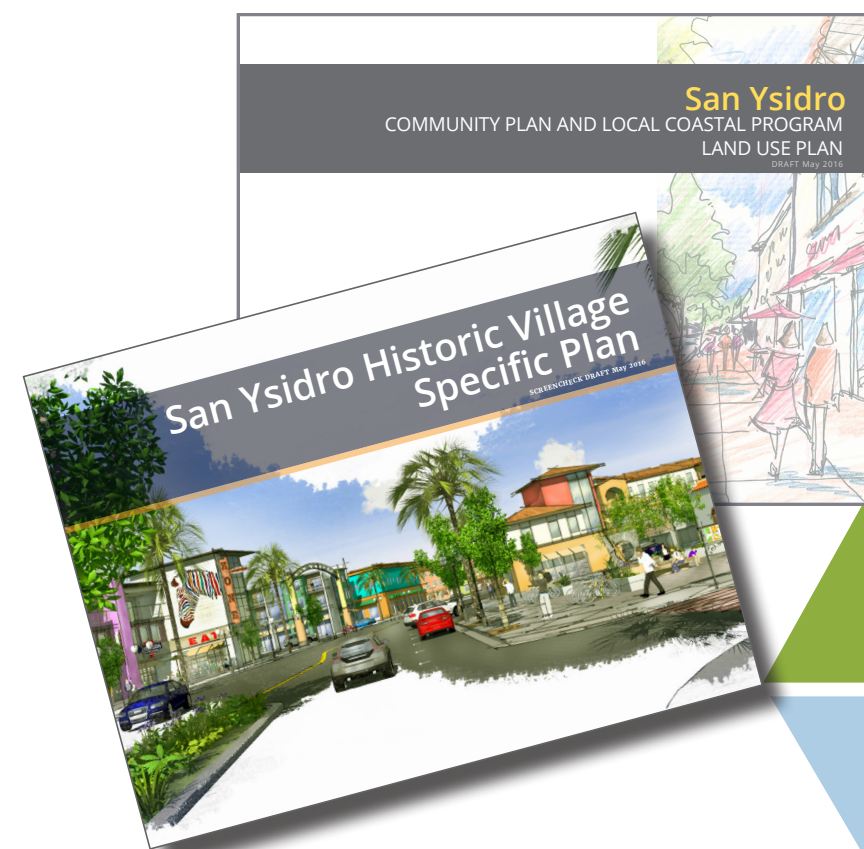
The Land Use Element includes policies to support:

- intensifying uses near transit
- promoting the City of Villages growth strategy
- providing for greater sustainable infill development opportunities

San Ysidro supports growth and investment

Learn More!

FOR MORE INFORMATION, VISIT THE CITY OF SAN DIEGO'S WEBSITE:
www.sandiego.gov/planning



The City of SAN DIEGO

explore & share our community vision

SAN YSIDRO
community plan

Acknowledgments

Jeff Murphy Planning Director
Tait Galloway Principal Planner
Sara Osborn Senior Planner/Project Manager

Consultants

RRM Design Group
Kimley Horn & Associates
Graphic Solutions

Prepared By:

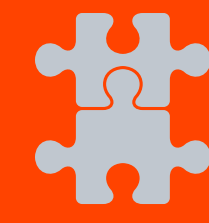


July 2017

COMMUNITY PLAN

The San Ysidro Community Plan is a component of the City of San Diego's General Plan.

The General Plan and Community Plan work together to establish the framework for growth and development in San Ysidro.



The San Ysidro Community Plan further expresses the General Plan goals and policies through site-specific recommendations and provides the basis for zoning and public improvements in the Impact Fee Study.

The Community Plan provides a long-range development guide for San Ysidro, its property owners, and residents. It provides direction on what types of future uses and public improvements should be developed in San Ysidro. The City's Land Development Code, San Ysidro Impact Fee Study, Capital Improvement Program, and San Ysidro Historic Village Specific Plan help ensure the vision of the Community Plan is implemented.

The Community Plan

The Community Plan focuses on community-level activities, increased housing opportunities and transit-oriented development to spur job opportunities and strengthen the local economy.

Enhancing local economic performance, including the creation of new locally-based businesses, and jobs, in turn promotes sustainable development and greater prosperity for the City and the region.

The Vision for the Community

San Ysidro is a long standing community of Mexican heritage, uniquely situated along the international border. The community strives for excellence in education, additional job opportunities, diversity in housing, access to health services, and takes pride in their neighborhood identity.

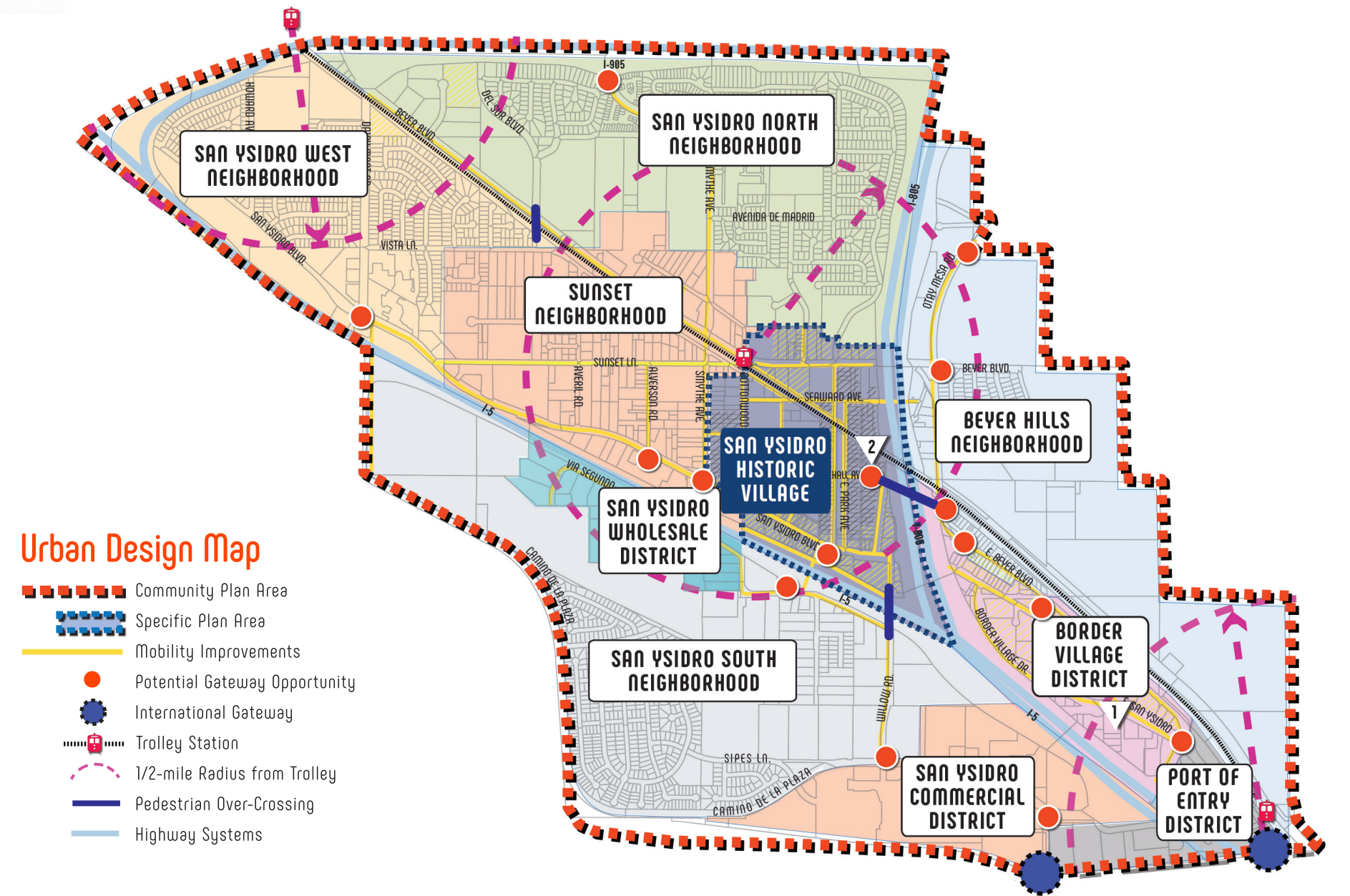


2/ Pedestrian Bridge Gateway & Plaza

Integrate plaza space and a promenade with enhanced landscaping and pedestrian amenities at the border entry, to draw visitors from the International Gateway into the Border Village.



Future Mercado & Plaza Opportunity



SPECIFIC PLAN

The San Ysidro Historic Village is "the heart" of the community.



This Transit-Oriented Village includes improved walkability and development opportunities around the Beyer Boulevard Trolley Station and West San Ysidro Boulevard, flexibility for mixed-use development, mobility improvements, and public space expansion.

The Specific Plan aims to catalyze development projects in support of the goals established for the San Ysidro Historic Village.

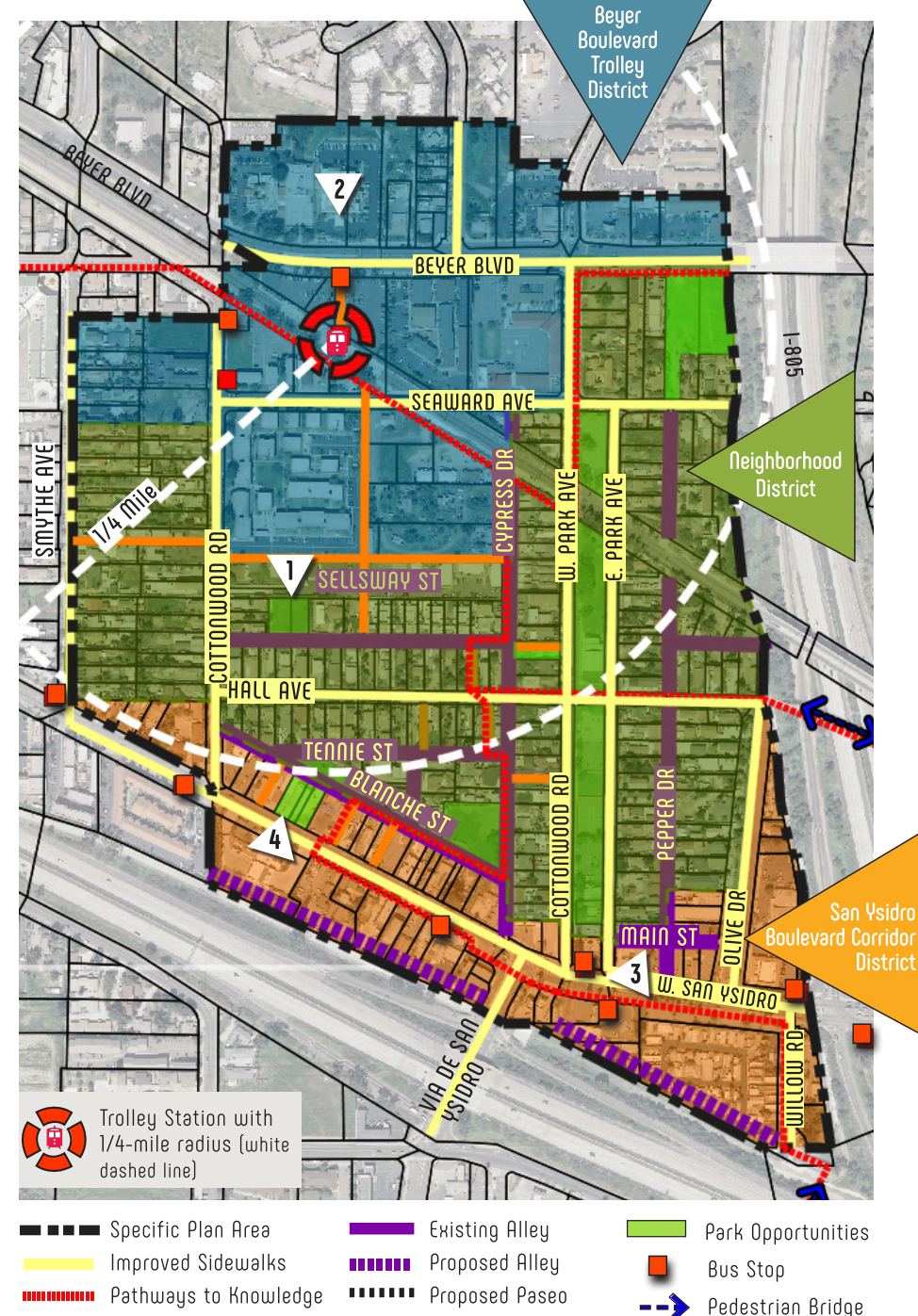
Create an attractive, intensified urban environment with a mix of land uses surrounding the Beyer Trolley Station and along San Ysidro Boulevard.

Provide an interconnected system of paseos, alleys, and sidewalks that connect pedestrians to the trolley, San Ysidro Boulevard, parks, the greater community, and to the international border.

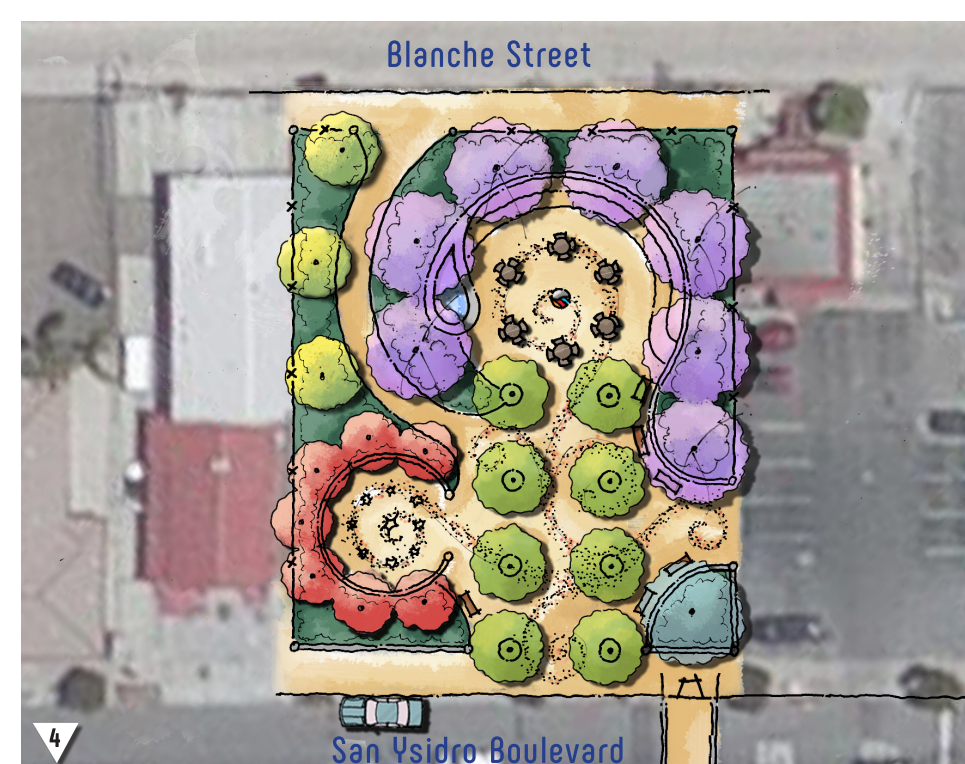
Design streets, alleys, paseos, and public spaces to create a lively and attractive street character.

Maintain the unique, "village" character of the area with uses, amenities, and design elements that reflect resident's needs and cultural heritage, and celebrate the Latino influence and culture of the area.

Provide opportunities for a diverse and balanced supply of housing types for households of all income levels.



The Neighborhood Village provides opportunities for public spaces and paseos to connect housing, parks, and alley improvements.



Neighborhood Plaza Concept



Create a sense of entry into the community through gateways, plazas, signage, unique street furnishings, landscaping, and cultural art at major entry points.



Promote outdoor activity with sidewalk cafes, public outdoor spaces and open areas, and pedestrian-oriented shopping plazas.